

June 12, 2017

625 Forest Edge Drive, Vernon Hills, IL 60061

TEL 847.478.9700 ■ FAX 847.478.9701

RE: Project Scheduling Notification Update #2
Three Lakes Drive Drainage Improvements
Village of Long Grove

www.gha-engineers.com

Dear Village of Long Grove Resident:

On behalf of the Village of Long Grove, we would like to notify you of a schedule change for the Three Lakes Drive Drainage Improvement project. Copenhaver Construction, Inc. is now scheduled to begin work on Monday, June 19, weather permitting.

Construction will include dewatering of the ponds at the existing road crossing culvert, cleaning of the culvert and installation of riser pipes. All work is being completed to facilitate drainage from the western pond to the eastern pond.

Please note that neither the Village nor the contractor can be responsible for damage to private utilities that are in the public right-of-way, for example, pet fences or irrigation lines. If these utilities are damaged, it will be the homeowner's responsibility to make repairs after the scheduled work is completed.

The site restoration will include topsoil, seed and hydromulch and/or erosion control blanket. After you notice the site restoration is placed, we ask for your assistance in watering as you would your own lawn to help establish the grass.

We recognize there may be times of inconvenience for you while the crews are working; however, we do not expect any of the roadways to be closed at any time during construction. Transportation and mail will continue to run regular routes.

We anticipate completion of this project in one week or by June 26, 2017, weather permitting.

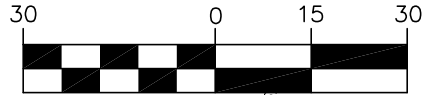
If you should have any questions concerning this work, please contact myself at 847-821-6231 or you can contact the Village Hall at 847-634-9440.

Sincerely,
Gewalt Hamilton Associates, Inc.

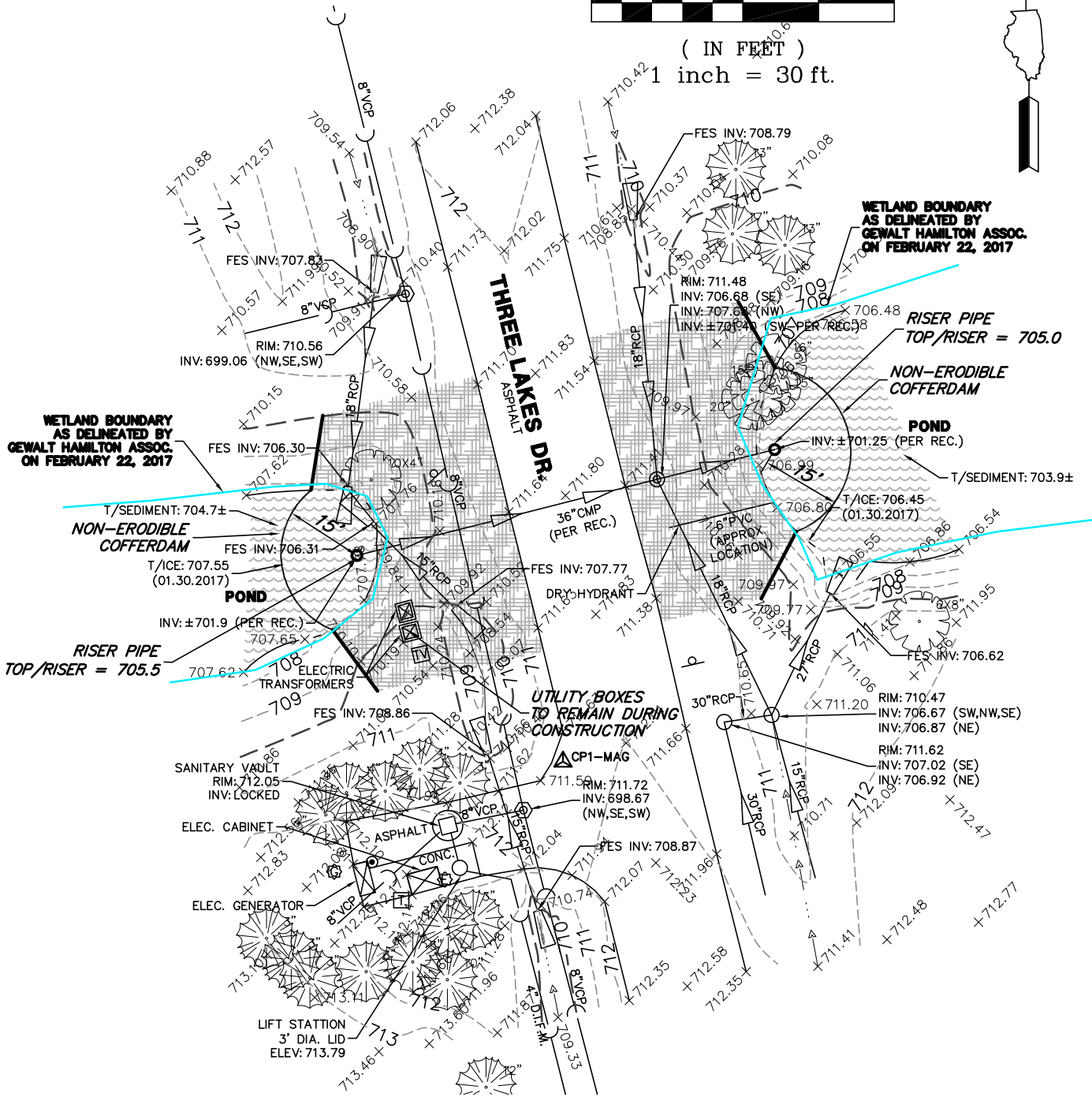


Geoffrey L. Perry, P.E.
Assistant Village Engineer

GRAPHIC SCALE



(IN FEET)
1 inch = 30 ft.



PROPOSED LEGEND



TOPSOIL FURNISH AND PLACE, VARIABLE DEPTH
SEEDING, CLASS 1A
MULCH, METHOD 3A



PERIMETER EROSION BARRIER

GHA GEWALT HAMILTON
ASSOCIATES, INC.
625 Forest Edge Drive ▪ Vernon Hills, IL. 60061
TEL 847.478.9700 ▪ FAX 847.478.9701

IMPROVEMENT PLAN

THREE LAKES DRIVE
VILLAGE OF LONG GROVE

FILE: 5000.023-PR1.dwg

DRAWN BY: MDJ

GHA PROJECT #

DATE: 4/12/17

5000.023

CHECKED BY: GLP

SCALE: 1"=30'